

**Attention !**

**Read the user manual carefully before using the device!**

Responsibility for damages, losses and personal accidents caused by not following the warnings in the user manual belongs to the user. In case of failure to comply with the instructions, the product will be out of warranty.

# INDEX

## 1. S2M060F0400ADB

- **Type:** Servo motor, High inertia, 400W, with brake.
- **Key Features:**
  - Nominal Torque: 1.27 N·m
  - Nominal Speed: 3000 rpm
  - Protection: IP67
- **Page:** 1

## 2. S2M060F0400ADX

- **Type:** Servo motor, High inertia, 400W, without brake.
- **Key Features:**
  - Nominal Torque: 1.27 N·m
  - Nominal Speed: 3000 rpm
  - Protection: IP67
- **Page:** 2

## 3. S2M080F0750ADB

- **Type:** Servo motor, High inertia, 750W, with brake.
- **Key Features:**
  - Nominal Torque: 2.39 N·m
  - Nominal Speed: 3000 rpm
  - Protection: IP67
- **Page:** 3

## 4. S2M080F0750ADX

- **Type:** Servo motor, High inertia, 750W, without brake.
- **Key Features:**
  - Nominal Torque: 2.39 N·m
  - Nominal Speed: 3000 rpm
  - Protection: IP67
- **Page:** 4

## 5. SM130F0850B

- **Type:** Servo motor, High inertia, 850W, with brake.
- **Key Features:**
  - Nominal Torque: 5.4 N·m
  - Nominal Speed: 1500 rpm
  - Protection: IP65
- **Page:** 5

## 6. SM130F0850X

- **Type:** Servo motor, High inertia, 850W, without brake.
- **Key Features:**
  - Nominal Torque: 5.39 N·m
  - Nominal Speed: 1500 rpm
  - Protection: IP65
- **Page:** 6

## 7. SM130F1300B

- **Type:** Servo motor, High inertia, 1300W, with brake.
- **Key Features:**
  - Nominal Torque: 8.4 N·m
  - Nominal Speed: 1500 rpm
  - Protection: IP65
- **Page:** 7

## 8. SM130F1300X

- **Type:** Servo motor, High inertia, 1300W, without brake.
- **Key Features:**
  - Nominal Torque: 8.4 N·m
  - Nominal Speed: 1500 rpm
  - Protection: IP65
- **Page:** 8

## 9. SM130F1800B

- **Type:** Servo motor, High inertia, 1800W, with brake.
- **Key Features:**
  - Nominal Torque: 11.5 N·m
  - Nominal Speed: 1500 rpm
  - Protection: IP65
- **Page:** 9

## 10. SM130F1800X

- **Type:** Servo motor, High inertia, 1800W, without brake.
- **Key Features:**
  - Nominal Torque: 11.5 N·m
  - Nominal Speed: 1500 rpm
  - Protection: IP65
- **Page:** 10

## 11. S2M180F2900BH

- **Type:** Servo motor, Medium inertia, 2900W, with brake.
- **Key Features:**
  - Nominal Torque: 18.6 N·m
  - Nominal Speed: 1500 rpm
  - Protection: IP65
- **Page:** 11

## 12. S2M180F2900XH

- **Type:** Servo motor, Medium inertia, 2900W, without brake.
- **Key Features:**
  - Nominal Torque: 18.6 N·m
  - Nominal Speed: 1500 rpm
  - Protection: IP65
- **Page:** 12

### 13. S2M180F4400BH

- **Type:** Servo motor, Medium inertia, 4400W, with brake.
- **Key Features:**
  - Nominal Torque: 28.4 N·m
  - Nominal Speed: 1500 rpm
  - Protection: IP65
- **Page:** 13

### 14. S2M180F4400XH

- **Type:** Servo motor, Medium inertia, 4400W, without brake.
- **Key Features:**
  - Nominal Torque: 28.4 N·m
  - Nominal Speed: 1500 rpm
  - Protection: IP65
- **Page:** 14

### 15. S2M180F5500BH

- **Type:** Servo motor, Medium inertia, 5500W, with brake.
- **Key Features:**
  - Nominal Torque: 35 N·m
  - Nominal Speed: 1500 rpm
  - Protection: IP65
- **Page:** 15

### 16. S2M180F5500XH

- **Type:** Servo motor, Medium inertia, 5500W, without brake.
- **Key Features:**
  - Nominal Torque: 35 N·m
  - Nominal Speed: 1500 rpm
  - Protection: IP65
- **Page:** 16

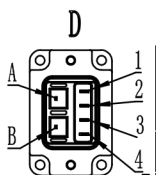
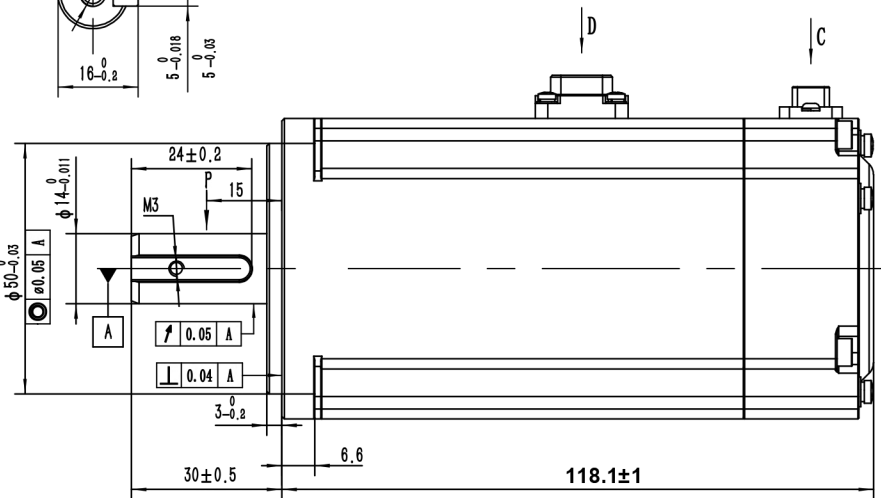
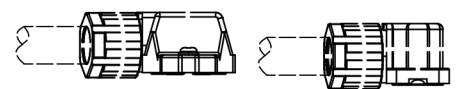
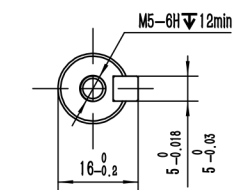
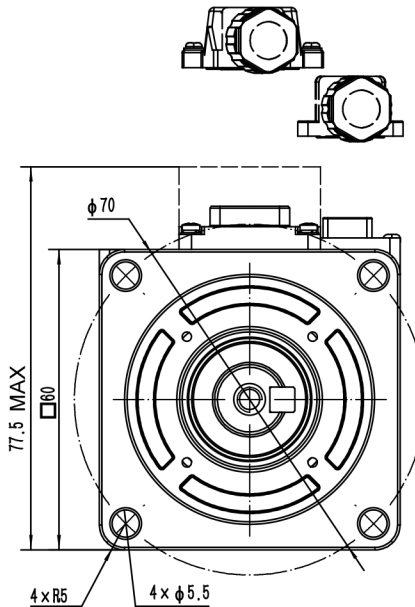
### 17. S2M180F7500BH

- **Type:** Servo motor, Medium inertia, 7500W, with brake.
- **Key Features:**
  - Nominal Torque: 48 N·m
  - Nominal Speed: 1500 rpm
  - Protection: IP65
- **Page:** 17

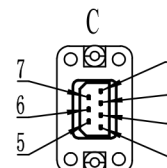
### 18. S2M180F7500XH

- **Type:** Servo motor, Medium inertia, 7500W, without brake.
- **Key Features:**
  - Nominal Torque: 48 N·m
  - Nominal Speed: 1500 rpm
  - Protection: IP65
- **Page:** 18

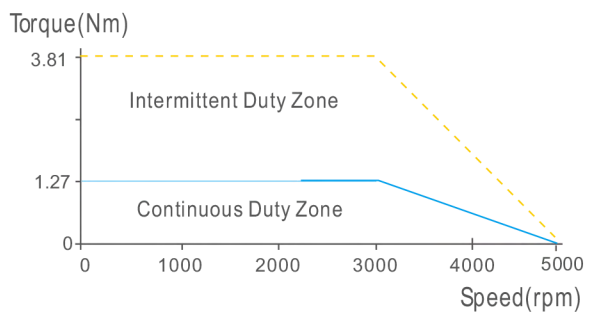
Rated Voltage (Vac)	220
Rated Power (w)	400
Rated Torque (N.m)	1.27
Peak Torque (N.m)	3.81
Rated Speed (rpm)	3000
Peak Speed (rpm)	5000
Rated Current (Amp)	2.1
Peak Current (Amp)	6.5
Torque Const (N.m/Amp)	0.645
Back EMF Const (V/krpm)	39
Resistance (Ω)	5.7±10%
Inductance (mH)	12±20%
Inertia (kg*m <sup>2</sup> *10 <sup>-4</sup> )	0.58
Poles	10
Encoder type	23bit optical
IP rating	IP67
Mass (Kg)	1.55




Wiring details of Power cable connector						
Pos	1	2	3	4	A	B
Signal	U	V	W	PE	0V	24V



Wiring details of encoder cable connector							
Pos	1	2	3	4	5	6	7
Signal	PE	5V	0V	SD+	SD-	Bat+	Bat-



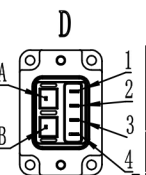
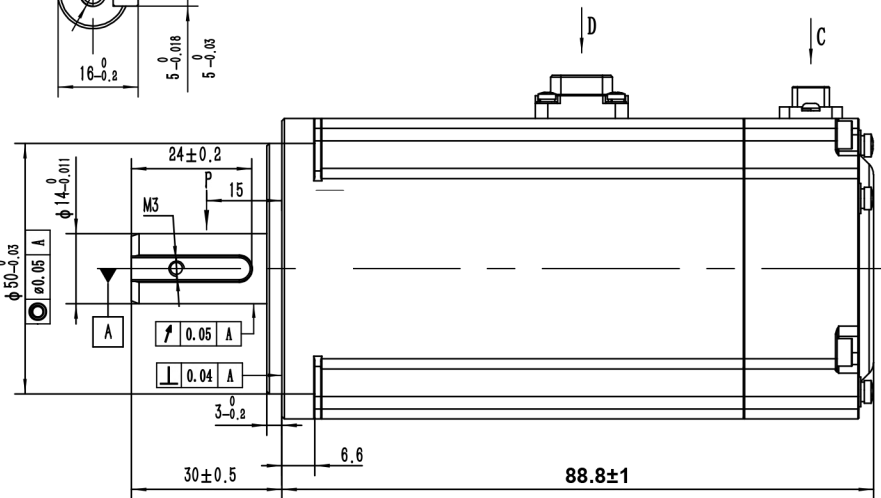
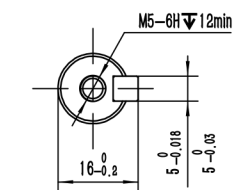
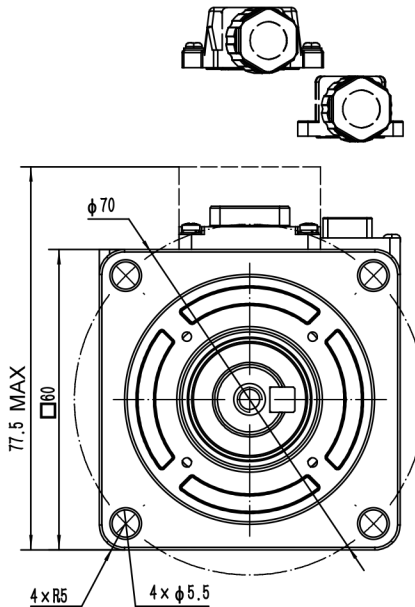
Brake Specification	
Capacity	8.3w
Rated Voltage	24vdc±10%
Holding Torque	≥1.5Nm
Braking time	≤50ms
Releasing time	≤20ms



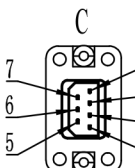
**S2M060F0400ADB**

60mm, high inertia, 400 w servo motor  
23bit optical encoder, with brake

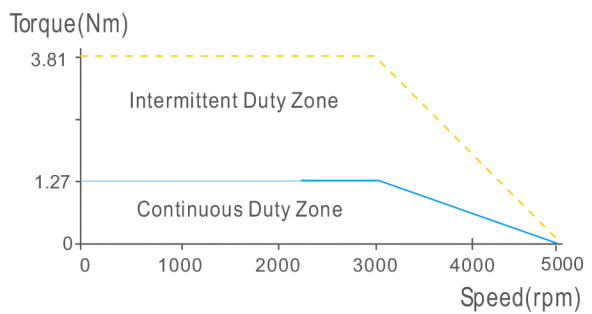
Rated Voltage (Vac)	220
Rated Power (w)	400
Rated Torque (N.m)	1.27
Peak Torque (N.m)	3.81
Rated Speed (rpm)	3000
Peak Speed (rpm)	5000
Rated Current (Amp)	2.1
Peak Current (Amp)	6.5
Torque Const (N.m/Amp)	0.645
Back EMF Const (V/krpm)	39
Resistance ( $\Omega$ )	$5.7 \pm 10\%$
Inductance (mH)	$12 \pm 20\%$
Inertia ( $\text{kg} \cdot \text{m}^2 \cdot 10^{-4}$ )	0.56
Poles	10
Encoder type	23bit optical
IP rating	IP67
Mass (Kg)	1.3



Wiring details of Power cable connector						
Pos	1	2	3	4	--	--
Signal	U	V	W	PE	--	--



Wiring details of encoder cable connector							
Pos	1	2	3	4	5	6	7
Signal	PE	5V	0V	SD+	SD-	Bat+	Bat-



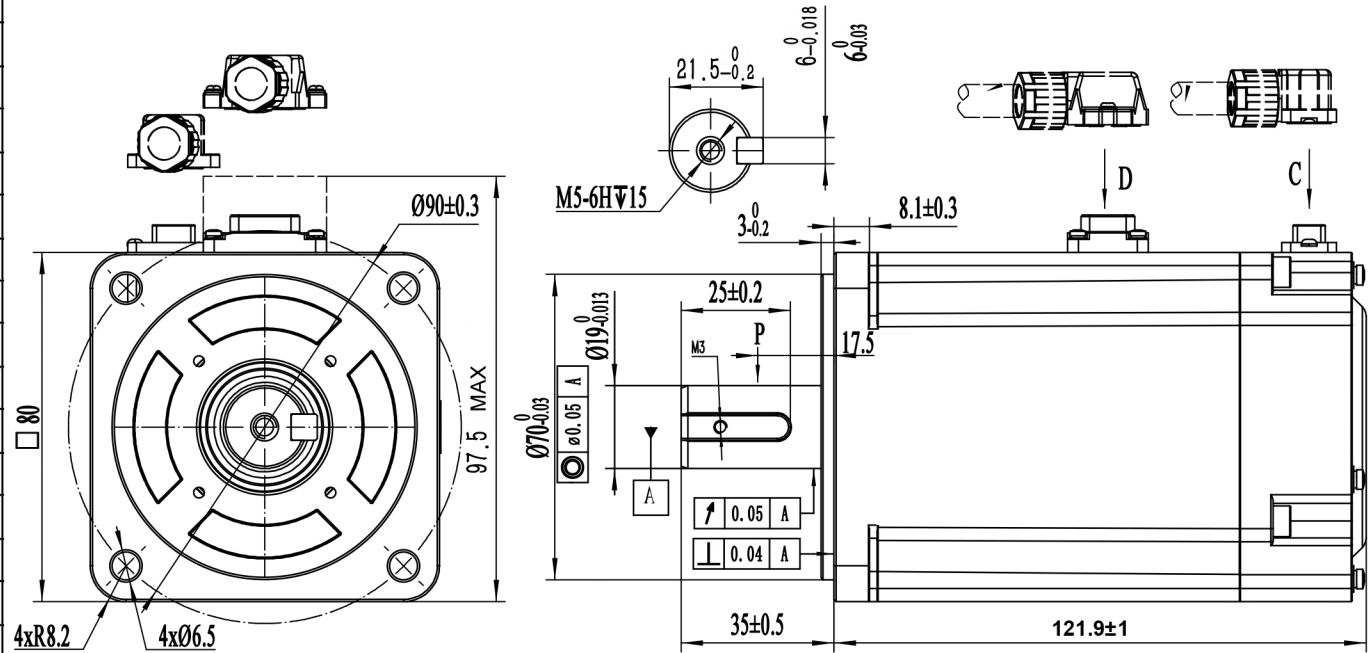
**GMT**CNT

S2M060F0400ADX

60mm, high inertia, 400w servo motor  
23bit optical encoder, no brake



Rated Voltage (Vac)	220
Rated Power (w)	750
Rated Torque (N.m)	2.39
Peak Torque (N.m)	7.17
Rated Speed (rpm)	3000
Peak Speed (rpm)	5000
Rated Current (Amp)	4.1
Peak Current (Amp)	13.4
Torque Const (N.m/Amp)	0.645
Back EMF Const (V/krpm)	39
Resistance ( $\Omega$ )	1.7
Inductance (mH)	8
Inertia ( $\text{kg}\cdot\text{m}^2\cdot 10^{-4}$ )	1.65
Poles	10
Encoder type	23bit optical
IP rating	IP67
Mass (Kg)	2.7



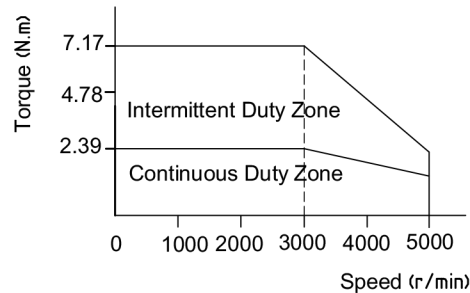
**D**

Wiring details of Power cable connector						
Pos	1	2	3	4	A	B
Signal	U	V	W	PE	0V	24V
Color	blue	black	red	Yel/Gre	black	red

**C**

Wiring details of encoder cable connector							
Pos	1	2	3	4	5	6	7
Signal	PE	5V	0V	SD+	SD-	--	--
Color	shield	red	black	blue	yellow	--	--

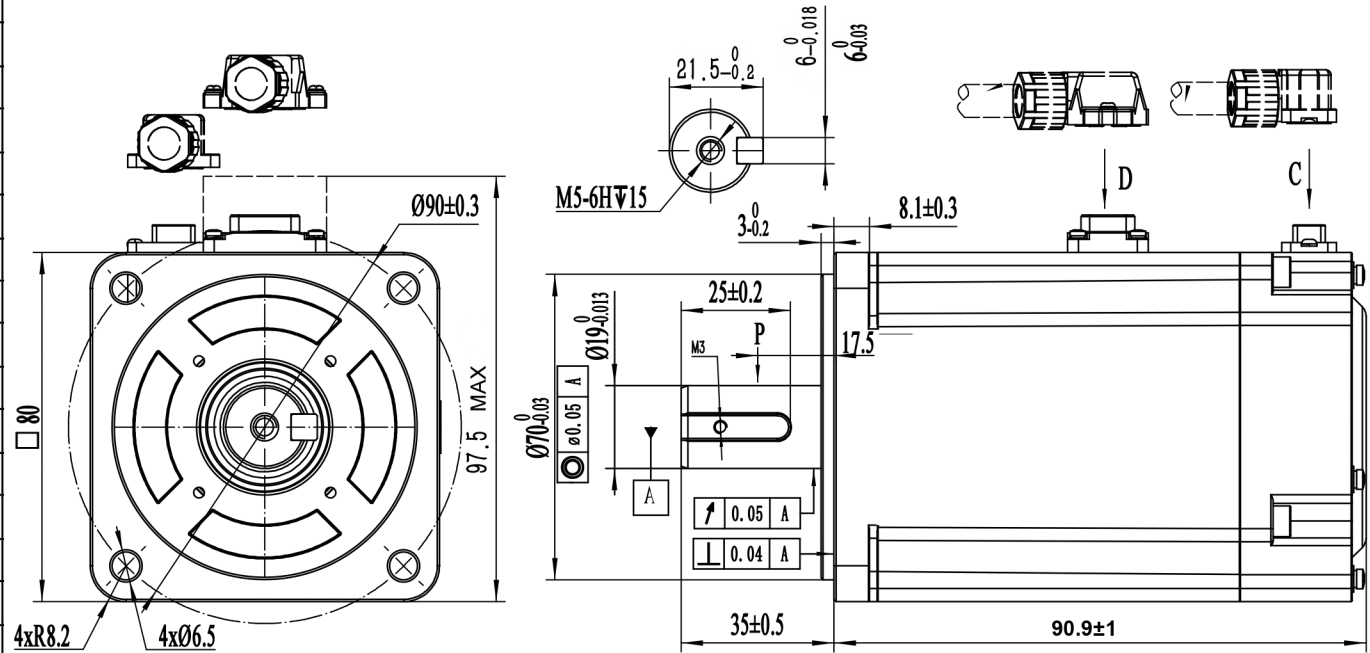
The curve of torque-speed



**GMT**CNT

**S2M080F0750ADB**  
 80mm, high inertia, 750w servo motor  
 23bit optical encoder, with brake

Rated Voltage (Vac)	220
Rated Power (w)	750
Rated Torque (N.m)	2.39
Peak Torque (N.m)	7.17
Rated Speed (rpm)	3000
Peak Speed (rpm)	5000
Rated Current (Amp)	4.1
Peak Current (Amp)	13.4
Torque Const (N.m/Amp)	0.645
Back EMF Const (V/krpm)	39
Resistance ( $\Omega$ )	1.7
Inductance (mH)	8
Inertia ( $\text{kg}\cdot\text{m}^2\cdot 10^{-4}$ )	1.5
Poles	10
Encoder type	23bit optical
IP rating	IP67
Mass (Kg)	2.12



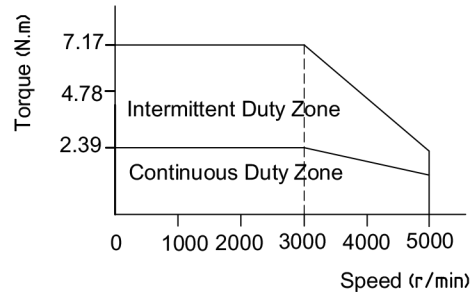
**D**

Wiring details of Power cable connector						
Pos	1	2	3	4	--	--
Signal	U	V	W	PE	--	--
Color	blue	black	red	Yel/Gre	--	--

**C**

Wiring details of encoder cable connector							
Pos	1	2	3	4	5	6	7
Signal	PE	5V	0V	SD+	SD-	--	--
Color	shield	red	black	blue	yellow	--	--

The curve of torque-speed

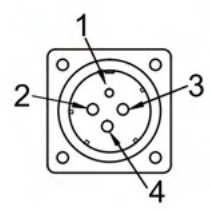
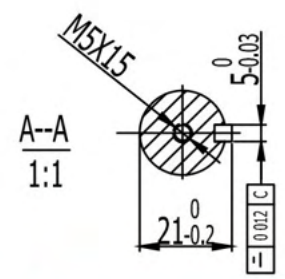
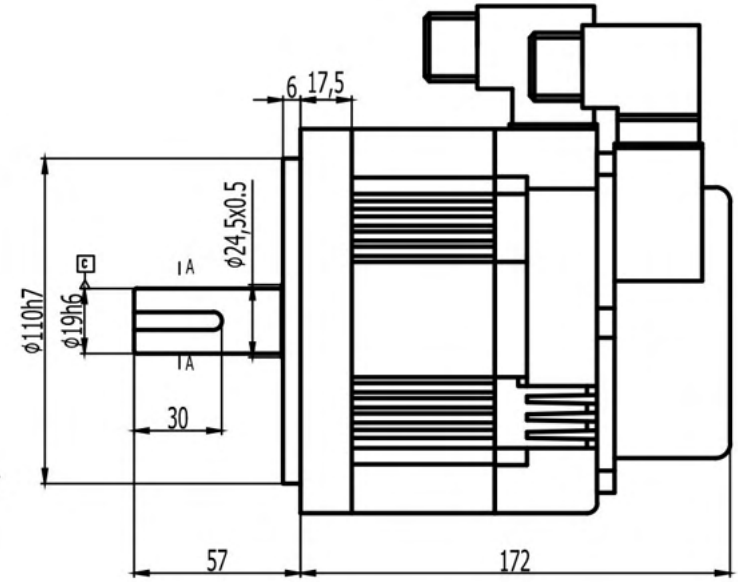
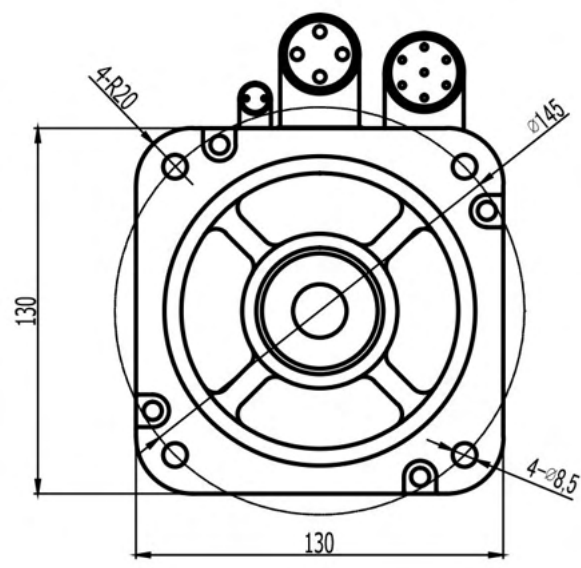


**GMT**CNT

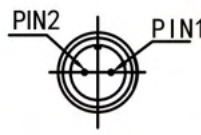
**S2M080F0750ADX**  
 80mm, high inertia, 750w servo motor  
 23bit optical encoder, no brake



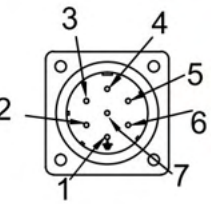
Nominal Voltage (VAC)	200-220
Nominal Power (W)	850
Nominal Torque (Nm)	5.4
Peak Torque (Nm)	13.5
Nominal Speed (rpm)	1500
Peak Speed (rpm)	3000
Nominal Current (Amp)	6.5
Peak Current (Amp)	16.3
Torque Const (Nm/Amp)	0.84
EMF Const (V/krpm)	64
Resistance	1.1±10%
( $\dot{y}$ ) Inductance	5.2±10%
Inertia (mH) (kg*m2*10-4)	13.88
Poles	10
Encoder	23 bits
IP Class	IP65
Weight (Kg)	6.9



Power cable connector				
Pȳn	1	2	3	4
Signal	PE	U	V	W

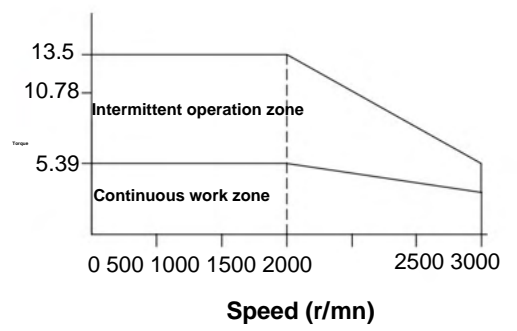


Brake Cable		
Pȳn	1	2
Signal	0V	24V



Encoder cable connector							
Pȳn	1	2	3	4	5	6	7
Signal	PE	BAT+	BAT-	SD-	0V	SD+	5V

Torque - Speed Curve

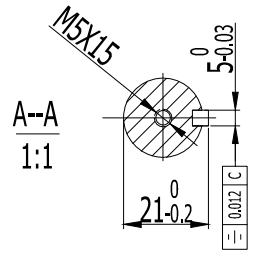
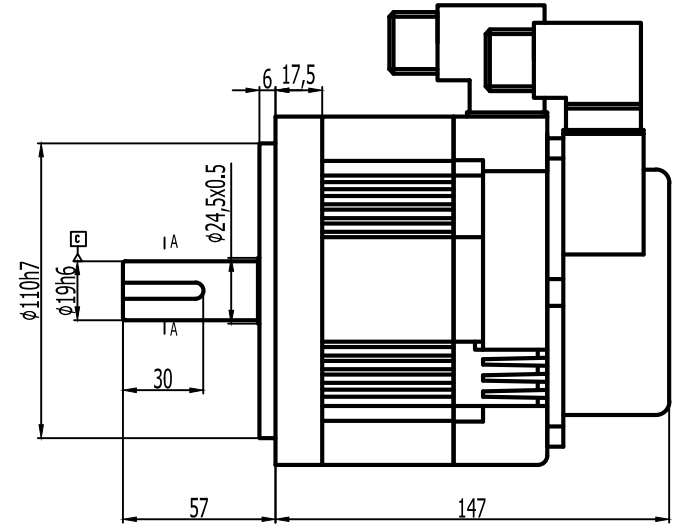
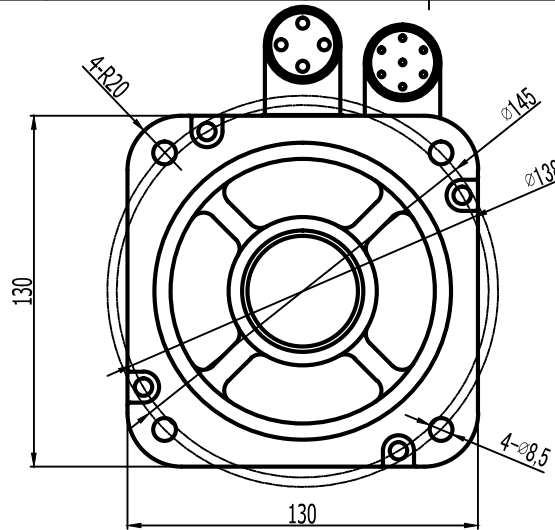


# SM130F0850B

130mm, high inertia, 850W - 23 bit absolute encoder and brake servo motor

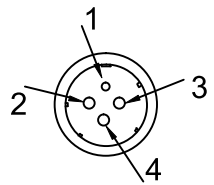
# 850W

Rated Voltage (Vac)	200-220
Rated Power (w)	850
Rated Torque (N.m)	5.39
Peak Torque (N.m)	13.5
Rated Speed (rpm)	1500
Peak Speed (rpm)	3000
Rated Current (Amp)	6.5
Peak Current (Amp)	16.3
Torque Const (N.m/Amp)	0.84
Back EMF Const (V/krpm)	64
Resistance (Ω)	1.1±10%
Inductance (mH)	5.2±20%
Inertia (kg*m <sup>2</sup> *10 <sup>-4</sup> )	13.88
Poles	10
Encoder type	23bit absolute
IP rating	IP65
Mass (Kg)	5.6

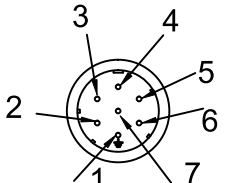


Connector Code Of Extension Cable Side			
Type	Winding Connector	Encoder Connector	Brake Connector
Connector	SC-HM23-4P	SC-HM23-7P	-

Connector Code Of Motor Side			
Type	Winding Connector	Encoder Connector	Brake Connector
Connector	SC-HM23-4S	SC-HM23-7S	-

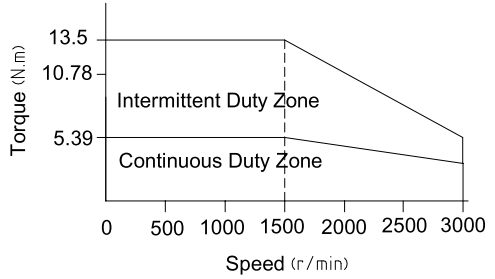


Wiring details of Power cable connector				
Pos	1	2	3	4
Signal	PE	U	V	W



Wiring details of encoder cable connector							
Pos	1	2	3	4	5	6	7
Signal	PE	BAT+	BAT-	SD-	0V	SD+	5V

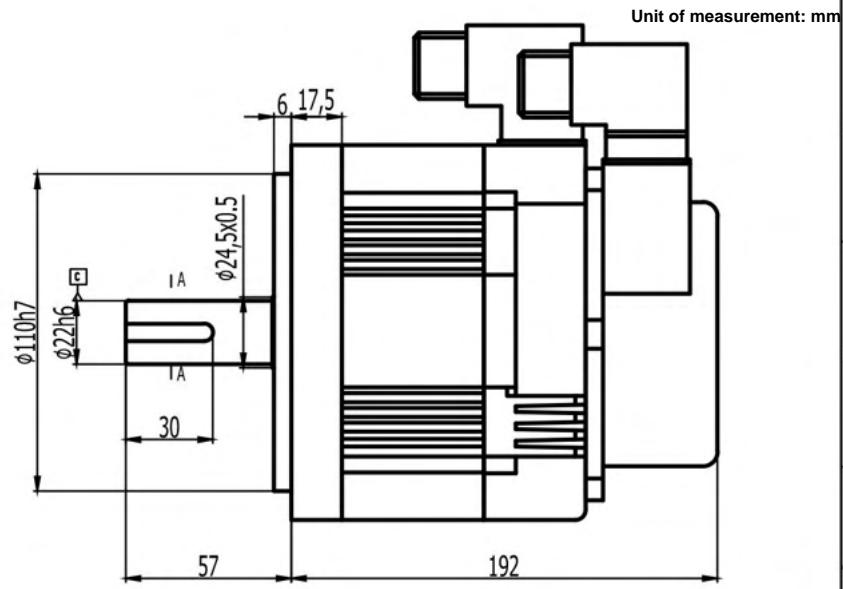
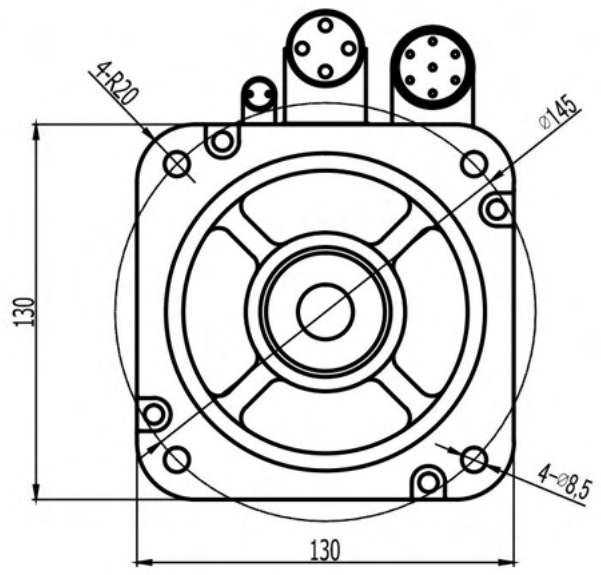
The curve of torque-speed



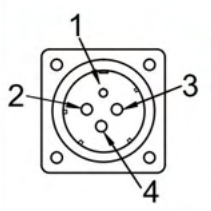
**SM130F0850X**  
 130mm , high inertia , 850w servo motor  
 23bit multi-turn absolute encoder , no brake



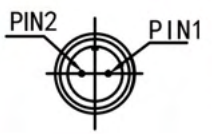
Nominal Voltage (VAC)	200-220
Nominal Power (W)	1300
Nominal Torque (Nm)	8.4
Peak Torque (Nm)	21
Nominal Speed (rpm)	1500
Peak Speed (rpm)	3000
Nominal Current (Amp)	9.5
Peak Current (Amp)	23.8
Torque Const (Nm/Amp)	0.88
EMF Const (V/krpm)	62.50
Resistance	0.56
( $\dot{y}$ ) Inductance	3.4
Inertia (mH) (kg*m <sup>2</sup> *10 <sup>-4</sup> )	22.3
Poles	10
Encoder	23 bits
IP Class	IP65
Weight (Kg)	8.8



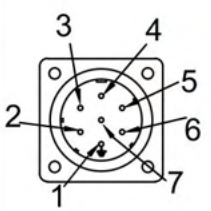
Unit of measurement: mm



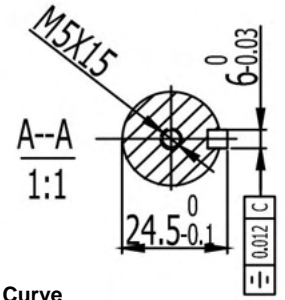
Power cable connector				
Pŷn	1	2	3	4
Signal	PE	U	V	W



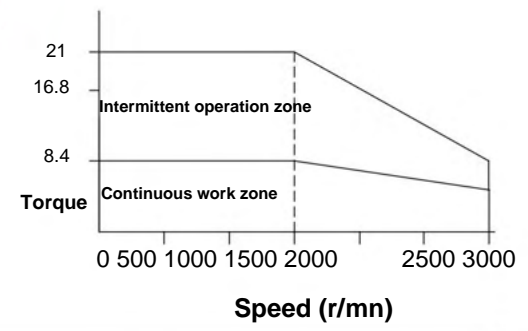
Brake Cable		
Pŷn	1	2
Signal	0V	24V



Encoder cable connector							
Pŷn	1	2	3	4	5	6	7
Signal	PE	BAT+	BAT-	SD-	0V	SD+	5V



Torque - Speed Curve

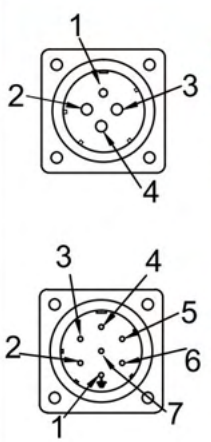
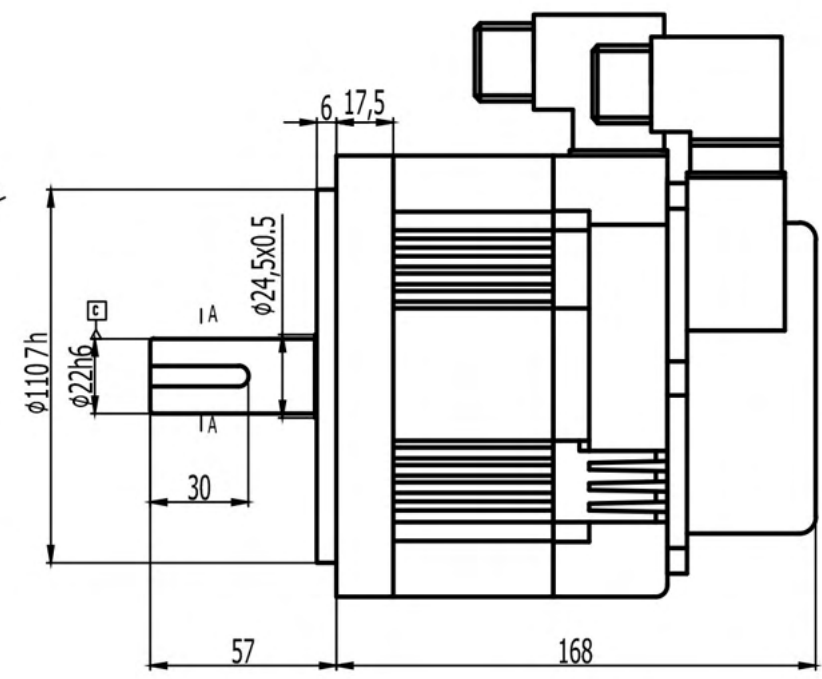
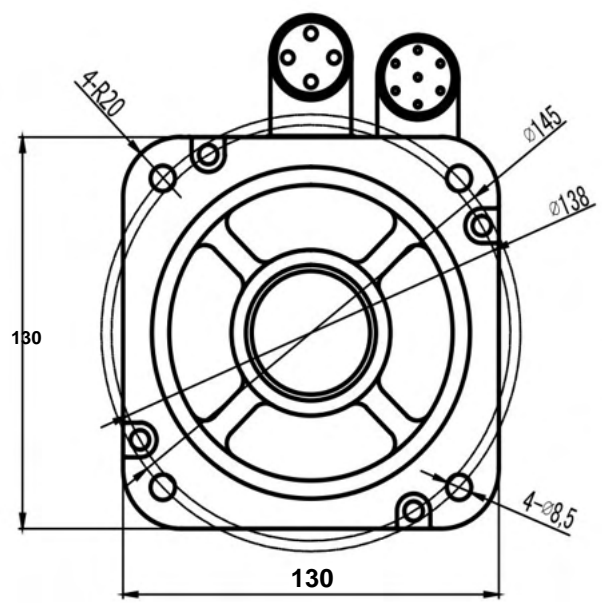


# SM130F1300B

130mm, high inertia, 1300W - 23 bit absolute encoder and brake servo motor

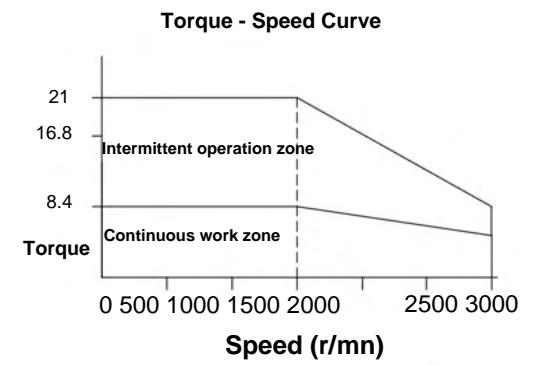
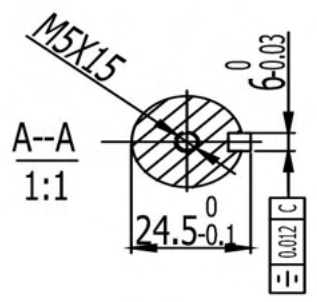
# 1300W

Nominal Voltage (VAC)	200-220
Nominal Power (W)	1300
Nominal Torque (Nm)	8.4
Peak Torque (Nm)	21
Nominal Speed (rpm)	1500
Peak Speed (rpm)	3000
Nominal Current (Amp)	9.5
Peak Current (Amp)	23.8
Torque Const (Nm/Amp)	0.88
EMF Const (V/krpm)	62.5
Resistance	0.56
( $\dot{y}$ ) Inductance	3.4
Inertia (mH) (kg*m <sup>2</sup> *10 <sup>-4</sup> )	20.59
Poles	10
Encoder	23 bits
IP Class	IP65
Weight (Kg)	7.5



Power cable connector				
Pŷn	1	2	3	4
Signal	PE	U	V	W

Encoder cable connector							
Pŷn	1	2	3	4	5	6	7
Signal	PE	BAT+	BAT-	SD-	0V	SD+	5V



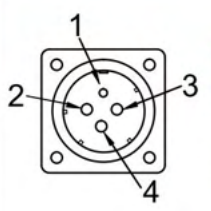
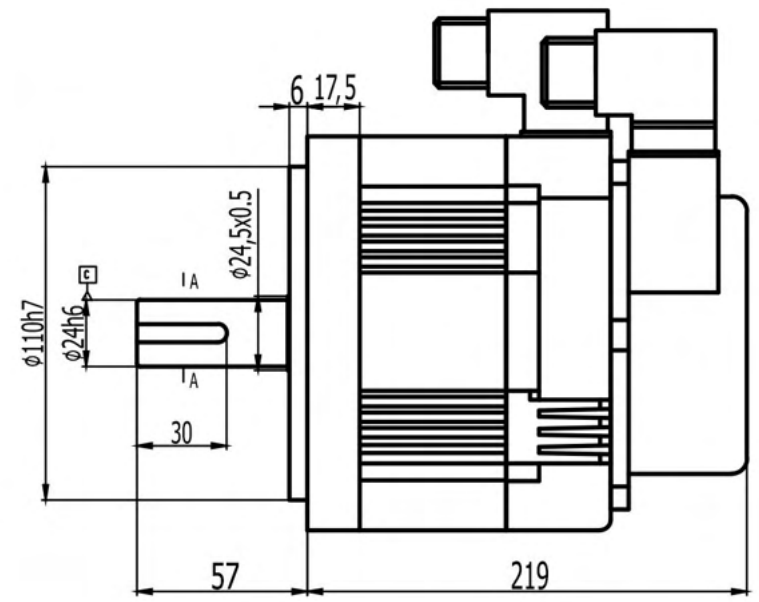
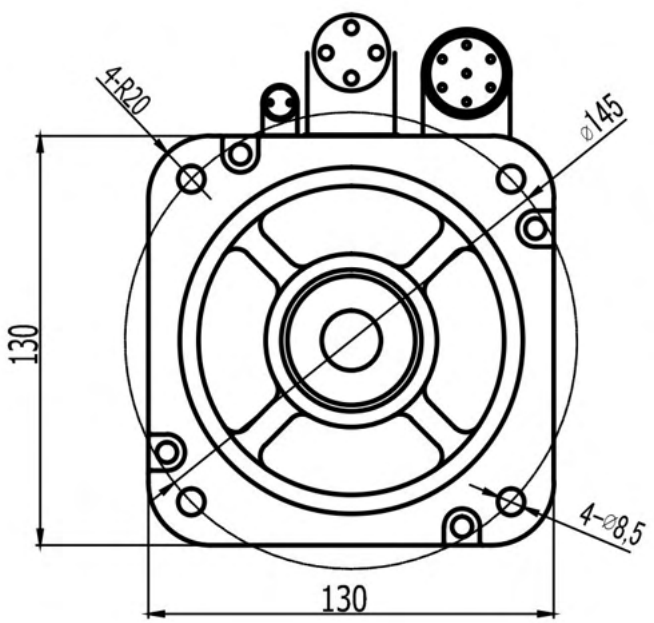
# SM130F1300X

130mm, high inertia, 1300W - 23 bit absolute encoder and brakeless servo motor

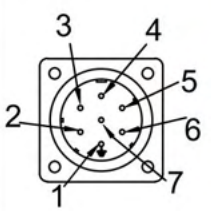
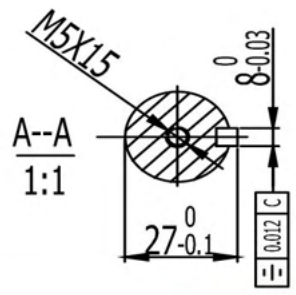
**1300W**



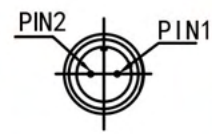
Nominal Voltage (VAC)	200-220
Nominal Power (W)	1800
Nominal Torque (Nm)	11.5
Peak Torque (Nm)	34.5
Nominal Speed (rpm)	1500
Peak Speed (rpm)	2000
Nominal Current (Amp)	9.0
Peak Current (Amp)	28.4
Torque Const (Nm/Amp)	1.27
EMF Const (V/krpm)	87
Resistance	0.68±10%
( $\dot{y}$ ) Inductance	4.26±20%
Inertia (mH) (kg*m <sup>2</sup> *10 <sup>-4</sup> )	30.15
Poles	10
Encoder	23 bits
IP Class	IP65
Weight (Kg)	14.5



Power cable connector				
Pñn	1	2	3	4
Signal	PE	U	V	W

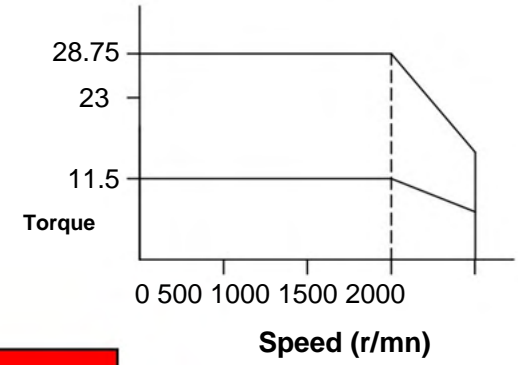


Encoder cable connector							
Pñn	1	2	3	4	5	6	7
Signal	PE	BAT+	BAT-	SD-	0V	SD+	5V



Brake Cable		
Pñn	1	2
Signal	0V	24V

Torque - Speed Curve

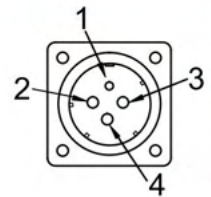
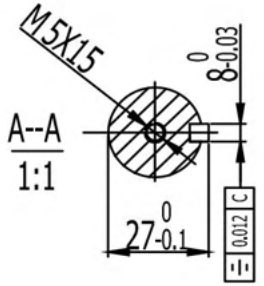
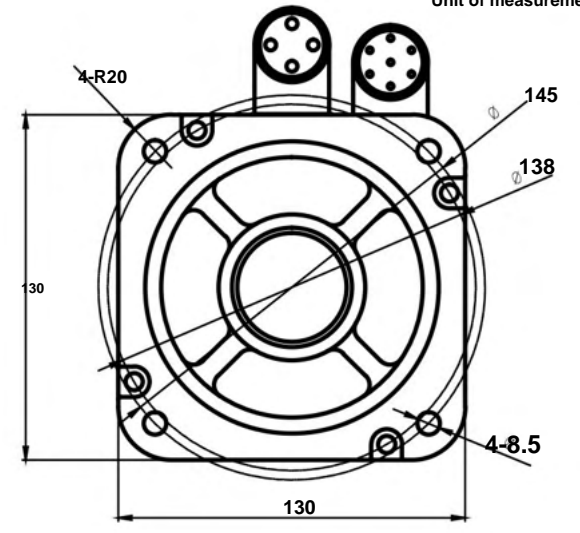
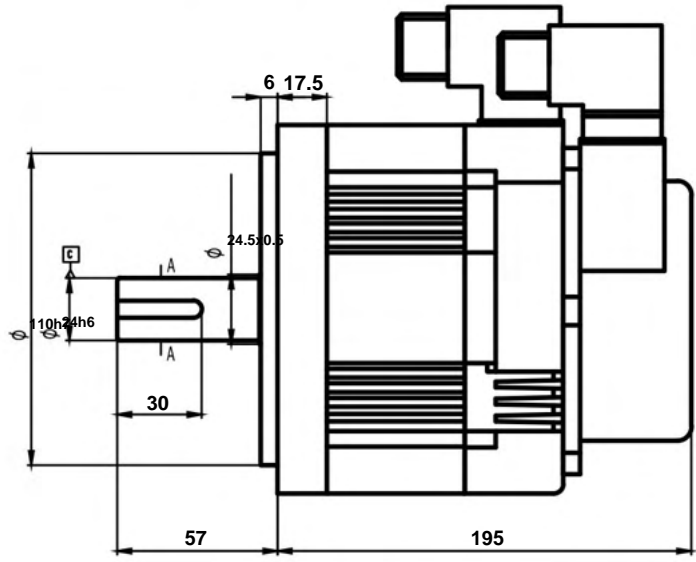


# SM130F1800B

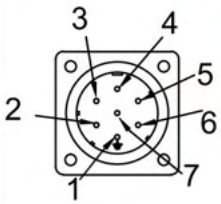
130mm, high inertia, 1800W - 23 bit absolute encoder and brake servo motor

**1800W**

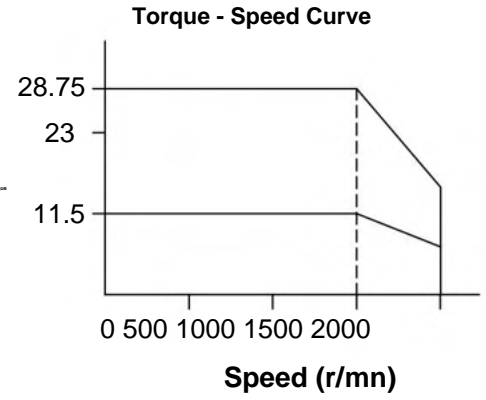
Nominal Voltage (VAC)	200-220
Nominal Power (W)	1800
Nominal Torque (Nm)	11.5
Peak Torque (Nm)	28.75
Nominal Speed (rpm)	1500
Peak Speed (rpm)	2000
Nominal Current (Amp)	9.0
Peak Current (Amp)	22.5
Torque Const (Nm/Amp)	1.28
EMF Const (V/krpm)	89
Resistance	0.81±10%
( $\dot{y}$ ) Inductance	4.6±10%
Inertia (mH) (kg*m <sup>2</sup> *10 <sup>-4</sup> )	20.59
Poles	10
Encoder	23 bits
IP Class	IP65
Weight (Kg)	7.5



Power cable connector				
Pŷn	1	2	3	4
Signal	PE	U	V	W



Encoder cable connector							
Pŷn	1	2	3	4	5	6	7
Signal	PE	BAT+	BAT-	SD-0V	SD+	5V	



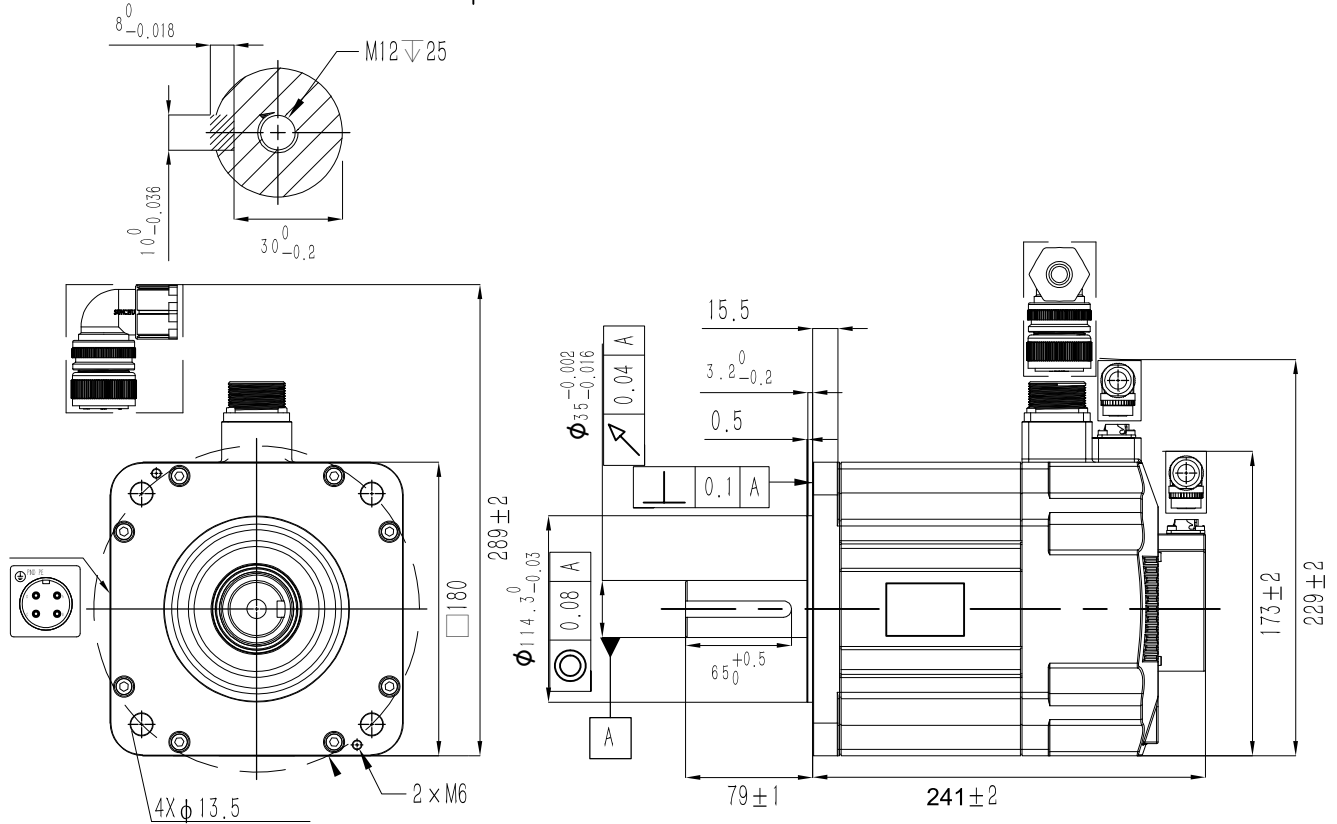
# SM130F1800X

130mm, high inertia, 1800W - 23 bit absolute encoder and brakeless servo motor

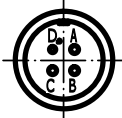
**1800W**



Rated Voltage (Vac)	<b>380</b>
Rated Power (w)	<b>2900</b>
Rated Torque (N.m)	<b>18.6</b>
Peak Torque (N.m)	<b>46.5</b>
Rated Speed (rpm)	<b>1500</b>
Peak Speed (rpm)	<b>3000</b>
Rated Current (Amp)	<b>11.9</b>
Peak Current (Amp)	<b>30</b>
Torque Const (N.m/Amp)	<b>1.56</b>
Back EMF Const (V/krpm)	<b>102</b>
Resistance (Ω)	<b>0.32</b>
Inductance (mH)	<b>7.5</b>
Inertia (kg*m <sup>2</sup> *10 <sup>-4</sup> )	<b>40.27</b>
Poles	<b>10</b>
Encoder type	<b>23bit optical</b>
IP rating	<b>IP65</b>
Mass (Kg)	<b>20.5</b>



Power connector



Wiring details of Power cable connector

Pos	A	B	C	D
Signal	U	V	W	PE
Color	red	yellow	blue	Yel/Gre

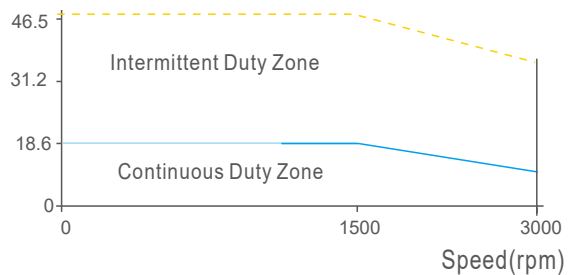
Encoder connector



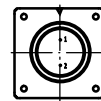
Wiring details of encoder cable connector

Pos	1	2	3	4	5	6	7	8	9	10
Signal	/	5V	0V	SD+	SD-	E+	E-	/	/	PE
Color	/	red	black	blue	yellow	brown	white	/	/	shield

Torque(Nm)



Brake connector



Brake connector

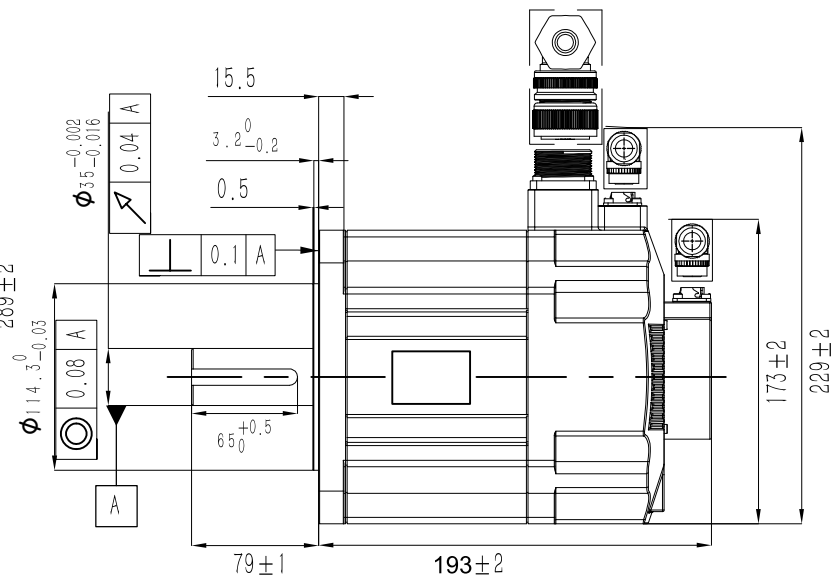
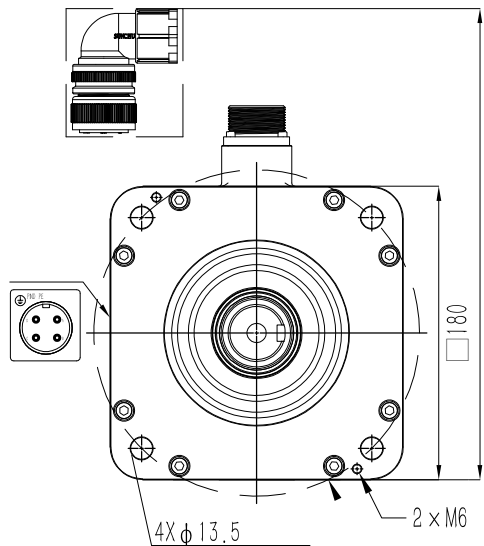
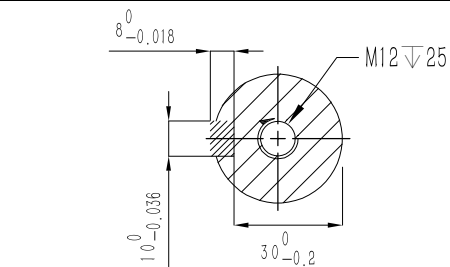
Pos	1	2
Signal	0V	24V
Color	/	/

**GMT**CNT

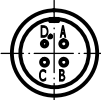
**S2M180F2900BH**

180mm, medium inertia, 2900W servo motor  
23bit optical encoder, brake  
MS10

Rated Voltage (Vac)	<b>380</b>
Rated Power (w)	<b>2900</b>
Rated Torque (N.m)	<b>18.6</b>
Peak Torque (N.m)	<b>46.5</b>
Rated Speed (rpm)	<b>1500</b>
Peak Speed (rpm)	<b>3000</b>
Rated Current (Amp)	<b>11.9</b>
Peak Current (Amp)	<b>30</b>
Torque Const (N.m/Amp)	<b>1.56</b>
Back EMF Const (V/krpm)	<b>102</b>
Resistance (Ω)	<b>0.32</b>
Inductance (mH)	<b>7.5</b>
Inertia (kg*m <sup>2</sup> *10 <sup>-4</sup> )	<b>39.78</b>
Poles	<b>10</b>
Encoder type	<b>23bit optical</b>
IP rating	<b>IP65</b>
Mass (Kg)	<b>17</b>



Power connector



**Wiring details of Power cable connector**

Pos	A	B	C	D
Signal	U	V	W	PE
Color	red	yellow	blue	Yel/Gre

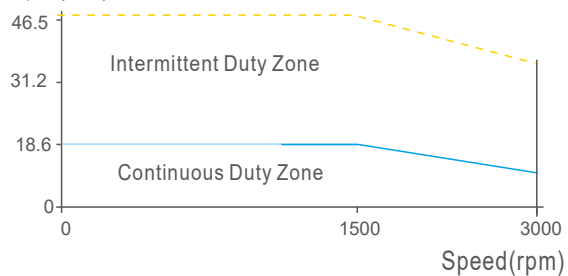
Encoder connector



**Wiring details of encoder cable connector**

Pos	1	2	3	4	5	6	7	8	9	10
Signal	/	5V	0V	SD+	SD-	E+	E-	/	/	PE
Color	/	red	black	blue	yellow	brown	white	/	/	shield

Torque(Nm)

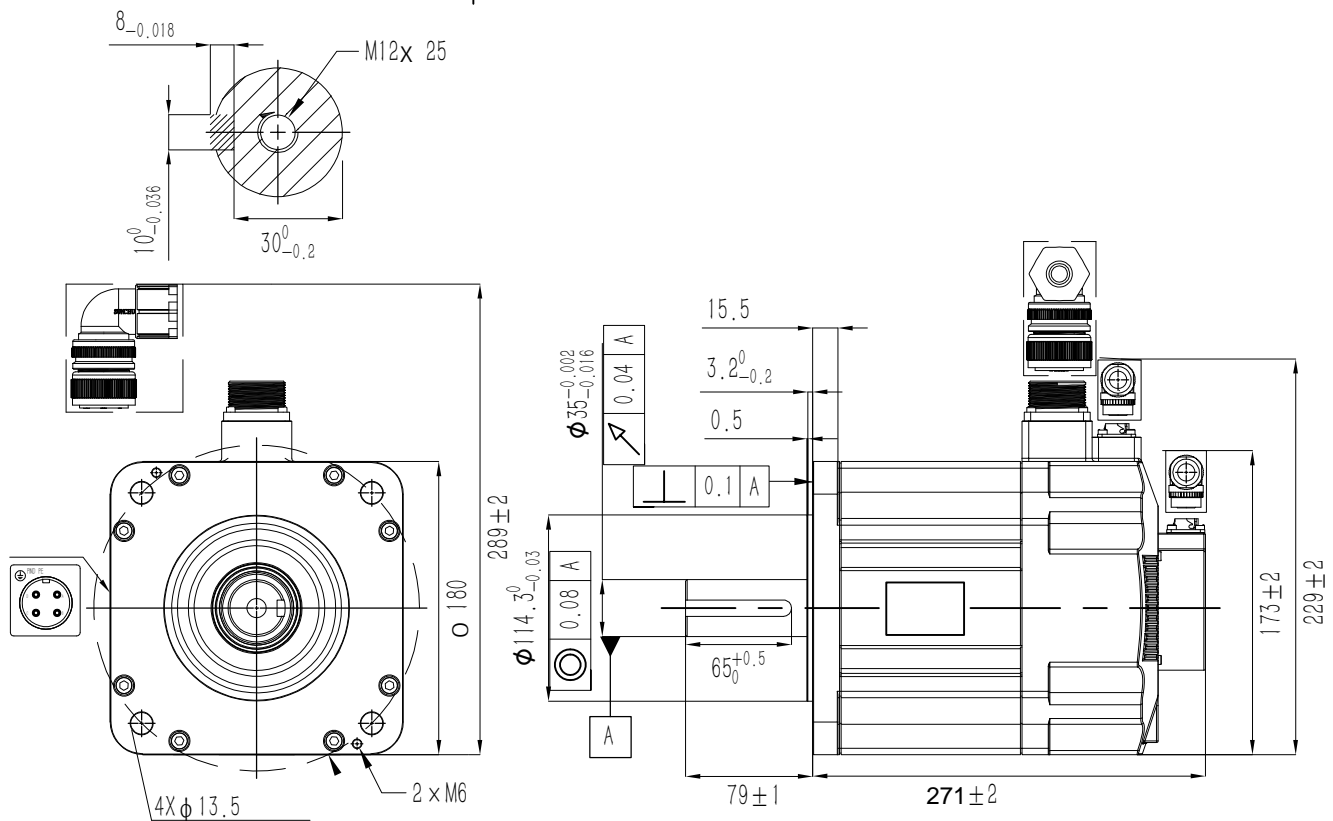


**GMT**CNT

**S2M180F2900XH**

180mm, medium inertia, 2900W servo motor  
23bit optical encoder, no brake  
MS10

Rated Voltage (Vac)	<b>380</b>
Rated Power (w)	<b>4400</b>
Rated Torque (N.m)	<b>28.4</b>
Peak Torque (N.m)	<b>71</b>
Rated Speed (rpm)	<b>1500</b>
Peak Speed (rpm)	<b>3000</b>
Rated Current (Amp)	<b>16.3</b>
Peak Current (Amp)	<b>41</b>
Torque Const (N.m/Amp)	<b>1.74</b>
Back EMF Const (V/krpm)	<b>115</b>
Resistance (Ω)	<b>0.26</b>
Inductance (mH)	<b>6.4</b>
Inertia (kg*m <sup>2</sup> *10 <sup>-4</sup> )	<b>60.41</b>
Poles	<b>10</b>
Encoder type	<b>23bit optical</b>
IP rating	<b>IP65</b>
Mass (Kg)	<b>25.4</b>



Power connector



Wiring details of Power cable connector

Pos	A	B	C	D
Signal	U	V	W	PE
Color	red	yellow	blue	Yel/Gre

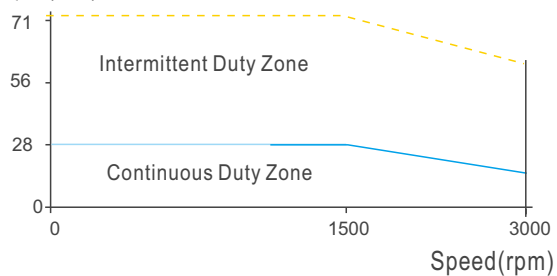
Encoder connector



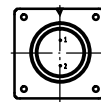
Wiring details of encoder cable connector

Pos	1	2	3	4	5	6	7	8	9	10
Signal	/	5V	0V	SD+	SD-	E+	E-	/	/	PE
Color	/	red	black	blue	yellow	brown	white	/	/	shield

Torque(Nm)



Brake connector



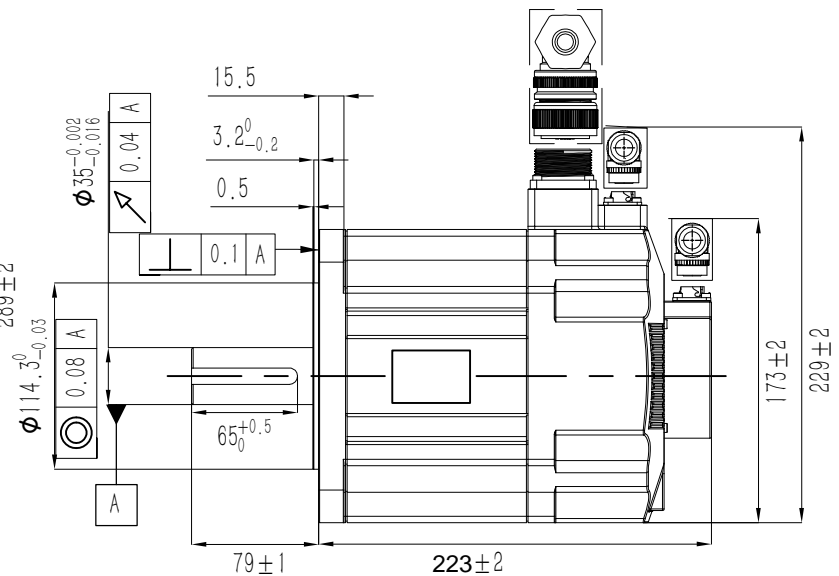
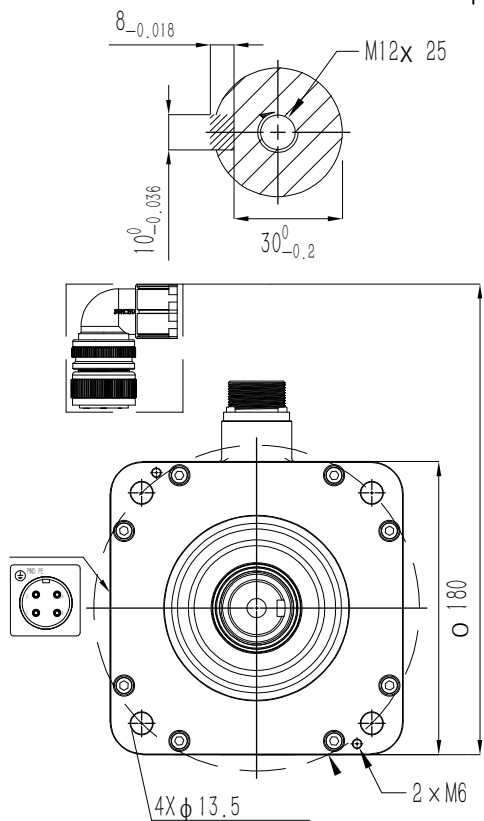
Brake connector

Pos	1	2
Signal	0V	24V
Color	/	/

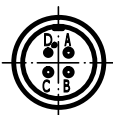
**S2M180F4400BH**

180mm, medium inertia, 4400W servo motor  
23bit optical encoder, brake  
MS10

Rated Voltage (Vac)	<b>380</b>
Rated Power (w)	<b>4400</b>
Rated Torque (N.m)	<b>28.4</b>
Peak Torque (N.m)	<b>71</b>
Rated Speed (rpm)	<b>1500</b>
Peak Speed (rpm)	<b>3000</b>
Rated Current (Amp)	<b>16.3</b>
Peak Current (Amp)	<b>41</b>
Torque Const (N.m/Amp)	<b>1.74</b>
Back EMF Const (V/krpm)	<b>115</b>
Resistance (Ω)	<b>0.26</b>
Inductance (mH)	<b>6.4</b>
Inertia (kg*m <sup>2</sup> *10 <sup>-4</sup> )	<b>59.67</b>
Poles	<b>10</b>
Encoder type	<b>23bit optical</b>
IP rating	<b>IP65</b>
Mass (Kg)	<b>21.9</b>



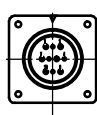
Power connector



Wiring details of Power cable connector

Pos	A	B	C	D
Signal	U	V	W	PE
Color	red	yellow	blue	Yel/Gre

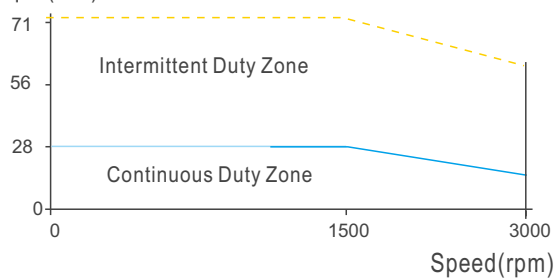
Encoder connector



Wiring details of encoder cable connector

Pos	1	2	3	4	5	6	7	8	9	10
Signal	/	5V	0V	SD+	SD-	E+	E-	/	/	PE
Color	/	red	black	blue	yellow	brown	white	/	/	shield

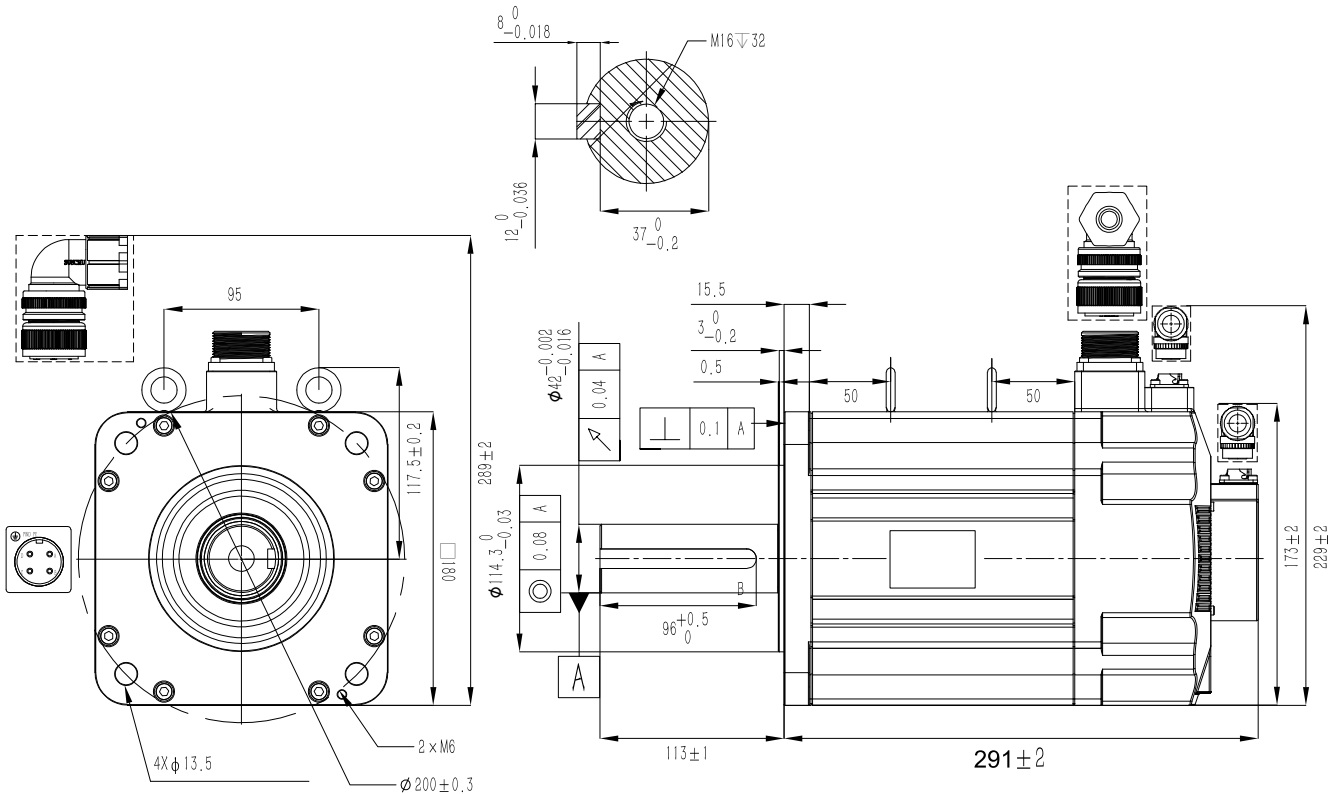
Torque(Nm)



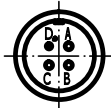
**S2M180F4400XH**

180mm,medium inertia,4400W servo motor  
23bit optical encoder, no brake

Rated Voltage (Vac)	<b>380</b>
Rated Power (w)	<b>5500</b>
Rated Torque (N.m)	<b>35</b>
Peak Torque (N.m)	<b>87.5</b>
Rated Speed (rpm)	<b>1500</b>
Peak Speed (rpm)	<b>3000</b>
Rated Current (Amp)	<b>20.5</b>
Peak Current (Amp)	<b>51</b>
Torque Const (N.m/Amp)	<b>1.7</b>
Back EMF Const (V/krpm)	<b>113</b>
Resistance (Ω)	<b>0.2</b>
Inductance (mH)	<b>4.9</b>
Inertia (kg*m <sup>2</sup> *10 <sup>-4</sup> )	<b>73.84</b>
Poles	<b>10</b>
Encoder type	<b>23bit optical</b>
IP rating	<b>IP65</b>
Mass (Kg)	<b>30.9</b>



Power connector



Wiring details of Power cable connector

Pos	A	B	C	D
Signal	U	V	W	PE
Color	red	yellow	blue	Yel/Gre

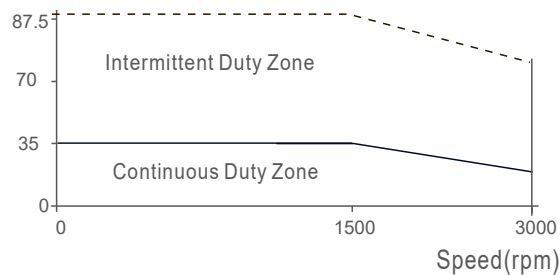
Encoder connector



Wiring details of encoder cable connector

Pos	1	2	3	4	5	6	7	8	9	10
Signal	/	5V	0V	SD+	SD-	E+	E-	/	/	PE
Color	/	red	black	blue	yellow	brown	white	/	/	shield

Torque(Nm)



Brake connector



Brake connector

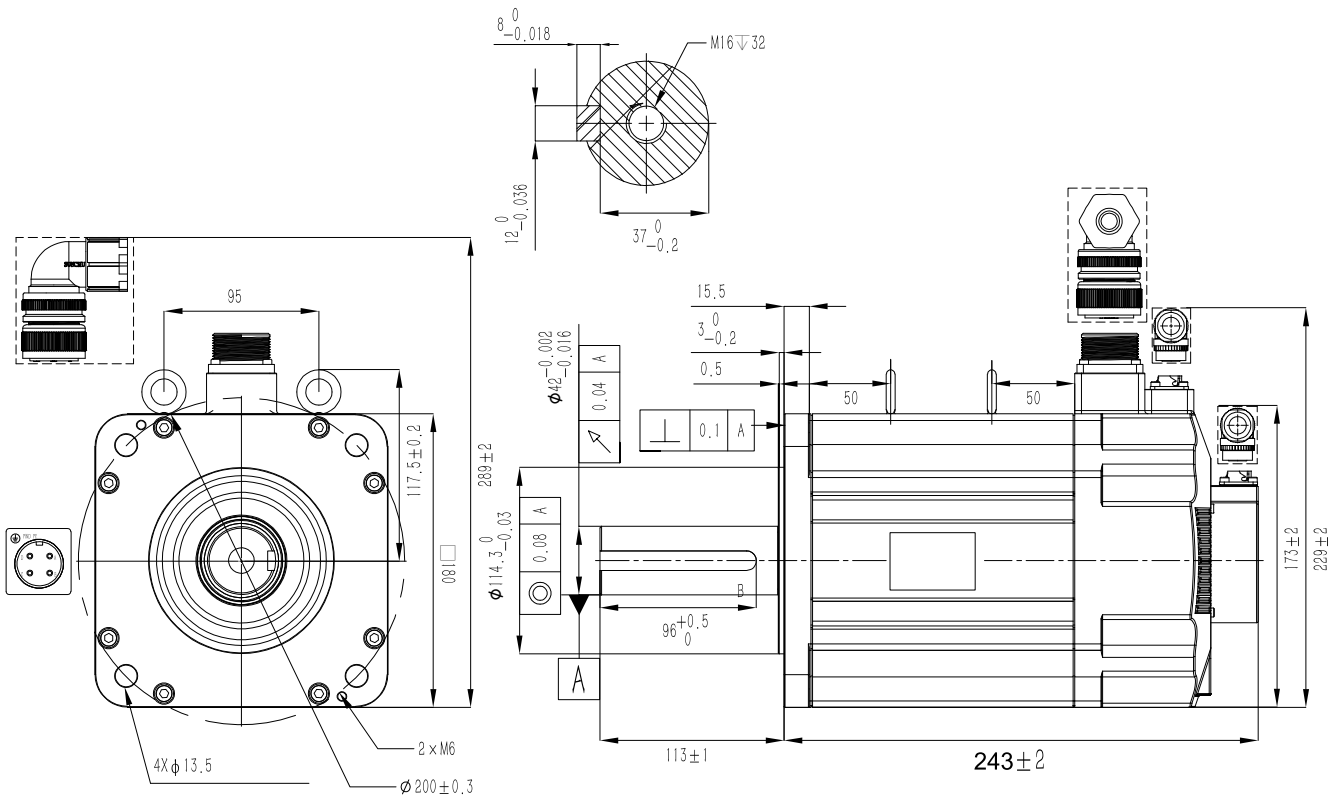
Pos	1	2
Signal	0V	24V
Color	/	/

**GMT**CNT

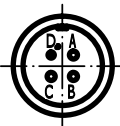
**S2M180F5500BH**

180mm, medium inertia, 5500W servo motor  
23bit optical encoder, brake  
MS10

Rated Voltage (Vac)	<b>380</b>
Rated Power (w)	<b>5500</b>
Rated Torque (N.m)	<b>35</b>
Peak Torque (N.m)	<b>87.5</b>
Rated Speed (rpm)	<b>1500</b>
Peak Speed (rpm)	<b>3000</b>
Rated Current (Amp)	<b>20.5</b>
Peak Current (Amp)	<b>51</b>
Torque Const (N.m/Amp)	<b>1.7</b>
Back EMF Const (V/krpm)	<b>113</b>
Resistance (Ω)	<b>0.2</b>
Inductance (mH)	<b>4.9</b>
Inertia (kg*m <sup>2</sup> *10 <sup>-4</sup> )	<b>72.93</b>
Poles	<b>10</b>
Encoder type	<b>23bit optical</b>
IP rating	<b>IP65</b>
Mass (Kg)	<b>25.9</b>



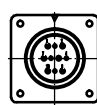
Power connector



Wiring details of Power cable connector

Pos	A	B	C	D
Signal	U	V	W	PE
Color	red	yellow	blue	Yel/Gre

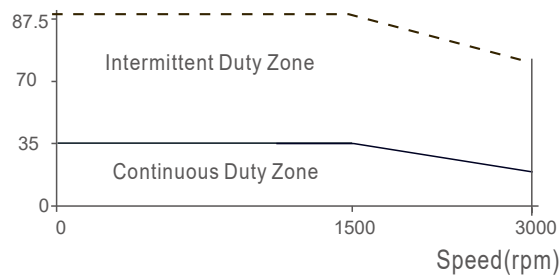
Encoder connector



Wiring details of encoder cable connector

Pos	1	2	3	4	5	6	7	8	9	10
Signal	/	5V	0V	SD+	SD-	E+	E-	/	/	PE
Color	/	red	black	blue	yellow	brown	white	/	/	shield

Torque(Nm)



**GMT**CNT

**S2M180F5500XH**

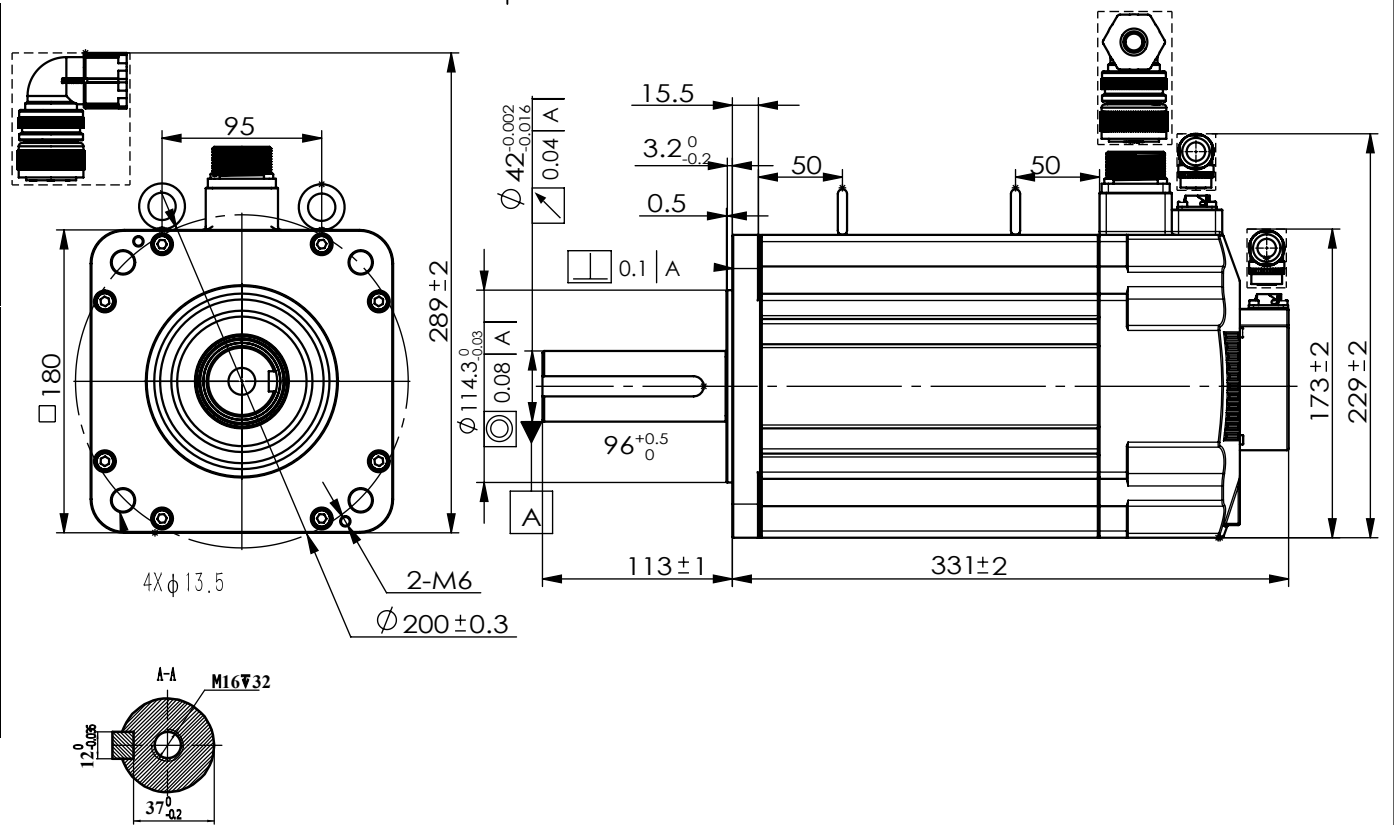
180mm, medium inertia, 5500W servo motor

23bit optical encoder, no brake

MS10



Rated Voltage (Vac)	400
Rated Power (w)	7500
Rated Torque (N.m)	48
Peak Torque (N.m)	119
Rated Speed (rpm)	1500
Peak Speed (rpm)	3000
Rated Current (Amp)	25.7
Peak Current (Amp)	64
Torque Const (N.m/Amp)	1.86
Back EMF Const (V/krpm)	123
Resistance (Ω)	0.16
Inductance (mH)	4.3
Inertia (kg*m <sup>2</sup> *10 <sup>-4</sup> )	100.7
Poles	10
Encoder type	23bit optical
IP rating	IP65
Mass (Kg)	37



Power connector



Wiring details of Power cable connector

Pos	A	B	C	D
Signal	U	V	W	PE
Color	red	yellow	blue	Yel/Gre

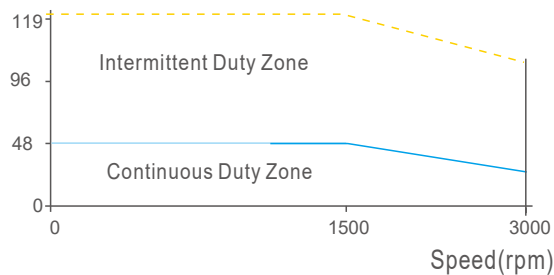
Encoder connector



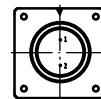
Wiring details of encoder cable connector

Pos	1	2	3	4	5	6	7	8	9	10
Signal	/	5V	0V	SD+	SD-	E+	E-	/	/	PE
Color	/	red	black	blue	yellow	brown	white	/	/	shield

Torque(Nm)



Brake connector



Brake connector

Pos	1	2	3
Signal	0V	24V	/
Color	/	/	/

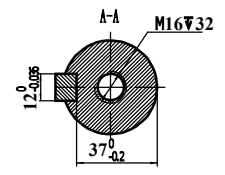
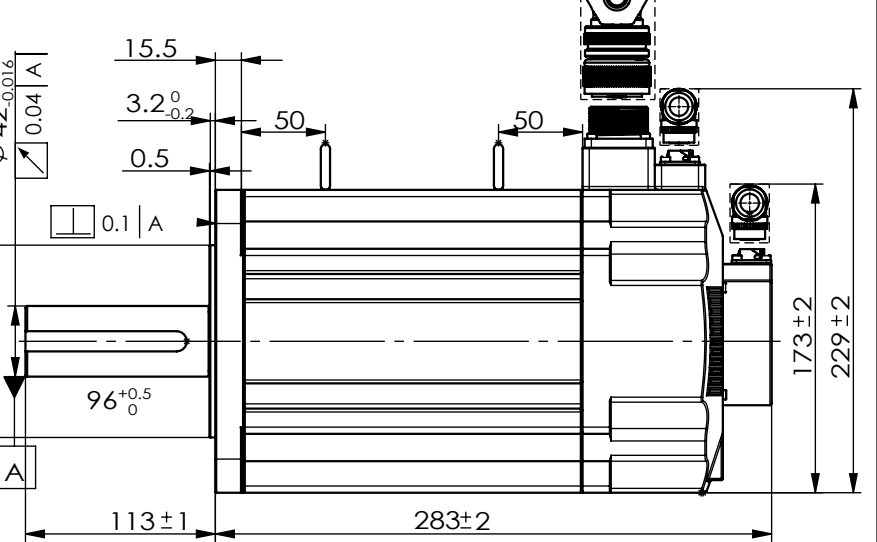
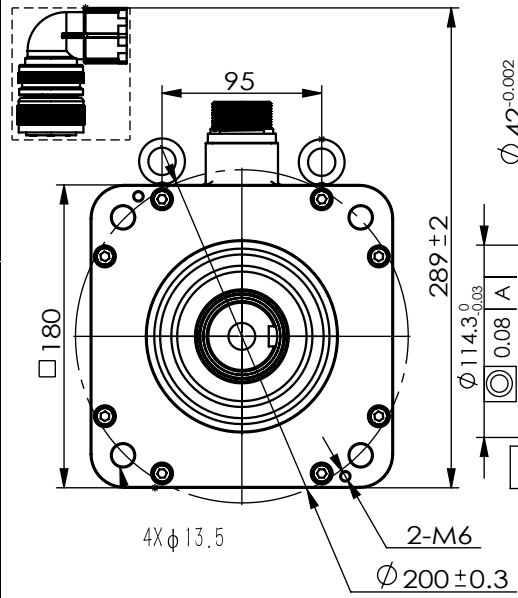
**GMT**CNT

**S2M180F7500BH**

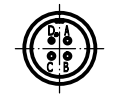
180 mm, medium inertia, 7500w servo motor  
23bit optical encoder, brake

MS10

Rated Voltage (Vac)	400
Rated Power (w)	7500
Rated Torque (N.m)	48
Peak Torque (N.m)	119
Rated Speed (rpm)	1500
Peak Speed (rpm)	3000
Rated Current (Amp)	25.7
Peak Current (Amp)	64
Torque Const (N.m/Amp)	1.86
Back EMF Const (V/krpm)	123
Resistance (Ω)	0.16
Inductance (mH)	4.3
Inertia (kg*m <sup>2</sup> *10 <sup>-4</sup> )	99.45
Poles	10
Encoder type	23bit optical
IP rating	IP65
Mass (Kg)	32

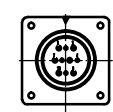


Power connector

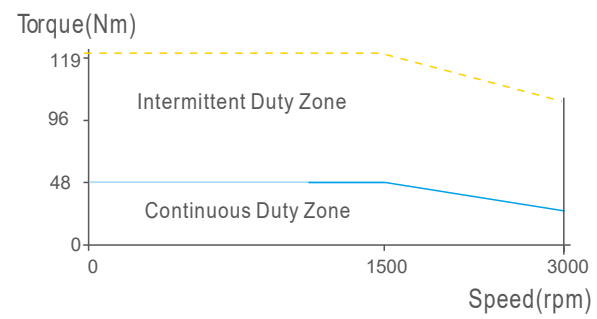


Pos	A	B	C	D
Signal	U	V	W	PE
Color	red	yellow	blue	Yel/Gre

Encoder connector



Pos	1	2	3	4	5	6	7	8	9	10
Signal	/	5V	0V	SD+	SD-	E+	E-	/	/	PE
Color	/	red	black	blue	yellow	brown	white	/	/	shield



**GMT**CNT

**S2M180F7500XH**

180 mm, medium inertia, 7500w servo motor  
23bit optical encoder, no brake  
MS10